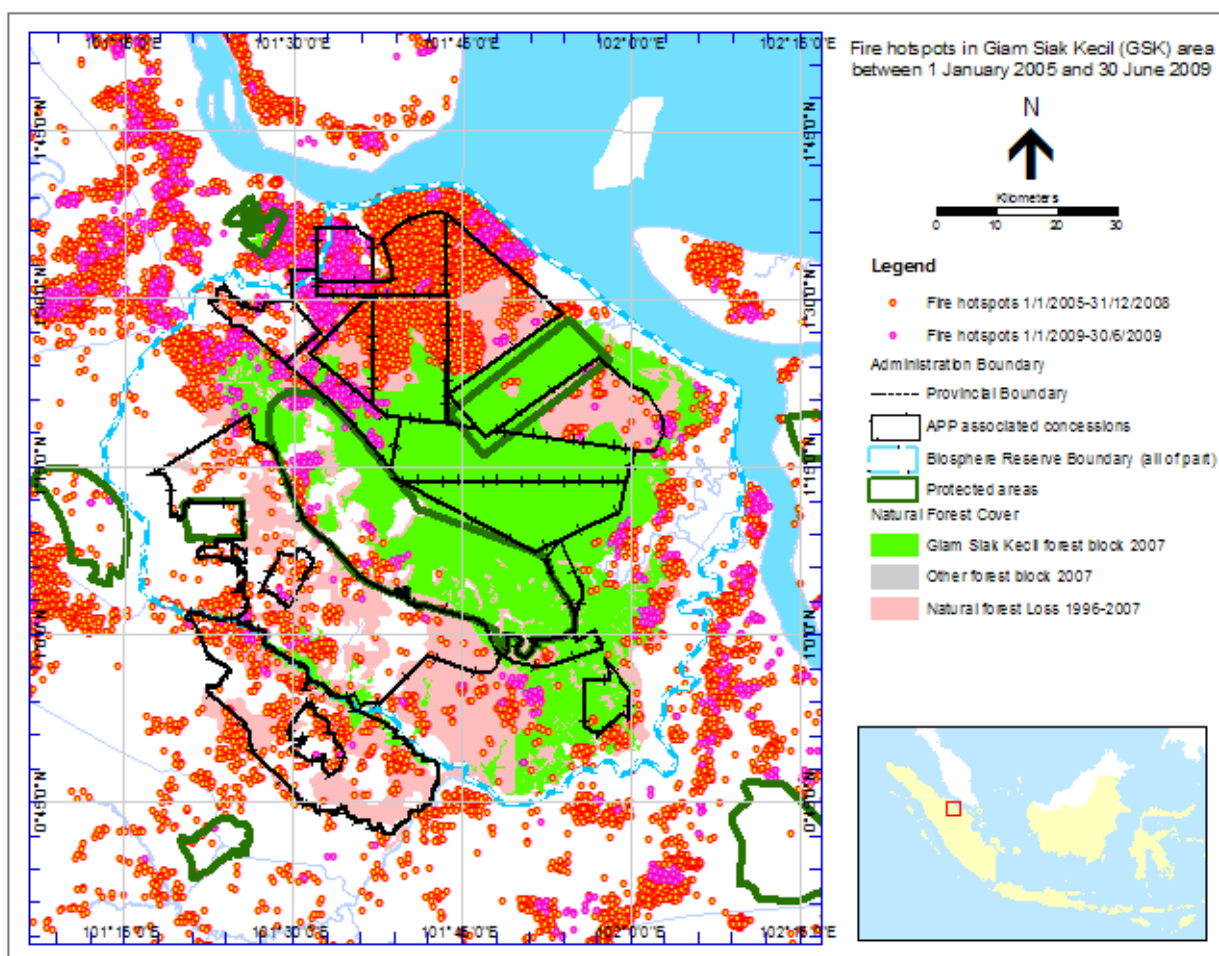


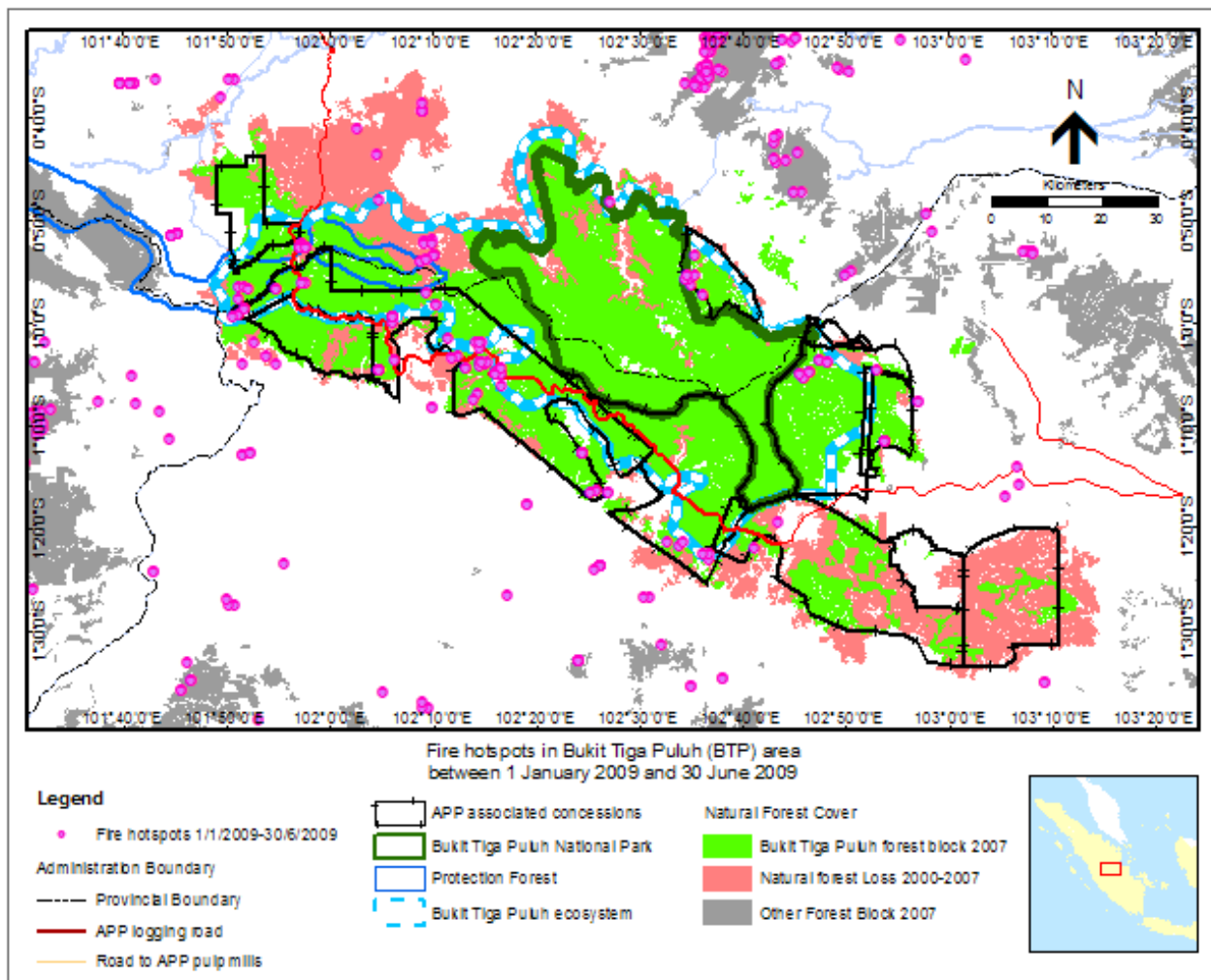
## Maps and Data to Accompany Eyes on the Forest's Press Release 27 July 2009



**Map 1.**—Fire hotspots in Giam Siak Kecil (GSK) area between 1 January 2005 and 30 June 2009. In total 950 hotspots were counted in areas where there used to be natural forest in 1996 in GSK (pink and green area).

**Table 1.**—Fire hotspots in Giam Siak Kecil (GSK) area between 1 January 2005 and 30 June 2009. In total 950 hotspots were counted in areas where there had been natural forest in 1996 in GSK (pink area), and they were divided into those inside APP/SMG associated concessions, protected areas and other areas (see Map 1).

	2005	2006	2007	2008	2009						
					Jan	Feb	Mar	Apr	May	Jun	Total
APP/SMG associated concession	4,192	751	246	326	241	148	5	13	19	52	478
	70%	74%	53%	52%	61%	59%	100%	76%	23%	26%	50%
Protected areas	28	7	11	25	40	13	0	4	44	49	150
	0%	1%	2%	4%	10%	5%	0%	24%	52%	24%	16%
Other	1,807	257	206	278	111	90	0	0	21	100	322
	30%	25%	44%	44%	28%	36%	0%	0%	25%	50%	34%
Total	6,027	1,015	463	629	392	251	5	17	84	201	950
	100%	100%	100%	100%	100%	100%	100%	100%	100%	100%	100%



**Map 2.**—2009 fire hotspots in Bukit Tigapuluh area. Many of the hotspots occur along the APP/SMG logging road through this natural forest.